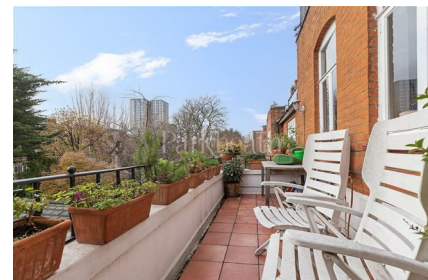


# Parkheath

*Sold on Service*

**Eton Avenue NW3**  
**Asking Price £1,675,000**



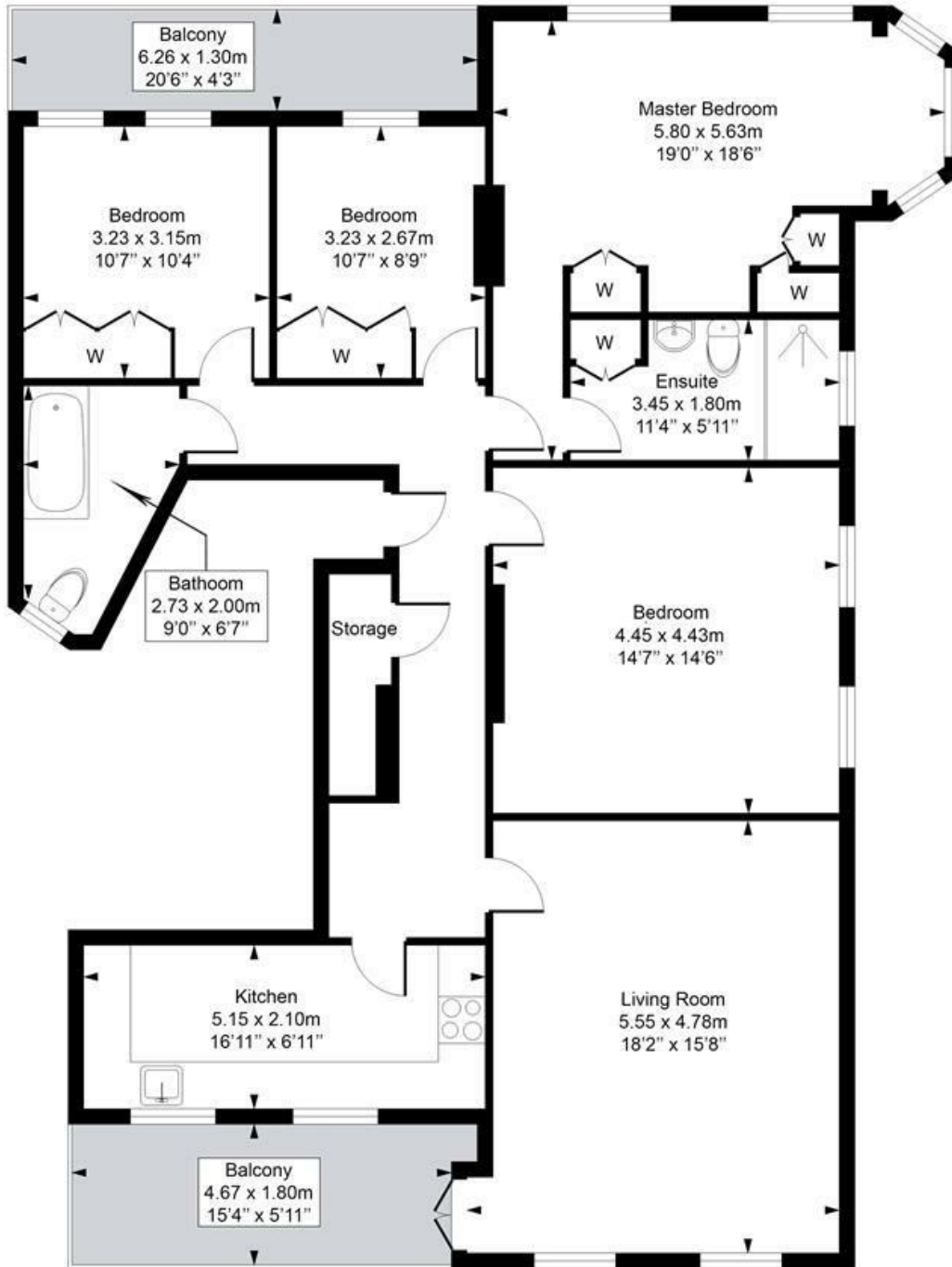
Capacious 4 double bedroom apartment  
Exquisite detached red brick period conversion  
Scope to create a stunning flat  
15ft south facing balcony  
A plethora of period features

1365 sq ft approx on the entire first floor  
18ft reception and 17ft kitchen  
Extremely bright and airy  
Share of freehold  
Prime road in Belsize Park

Belsize Park Office 020 7431 3104

# Eton Avenue

Approximate Gross Internal Area = 126 sq.m / 1365 sq.ft



## First Floor

This plan is for layout guidance only. Drawn in accordance with RICS guidelines. Not drawn to scale unless stated. Windows & door openings are approximate. Whilst every care is taken in the preparation of this plan, please check all dimensions, shapes & compass bearings before marking any decisions reliant upon them.

ELLIE CLAIRE PHOTOGRAPHY LTD  
[www.ellieclairephotography.com](http://www.ellieclairephotography.com)

The particulars do not constitute part of an offer or contract. The particulars, including text, photographs and plans, are for the guidance only of prospective purchasers/tenants and must not be relied upon as statements of fact. The descriptions provided therein represent the opinion of the author and whilst given in good faith should not be construed as statements of fact. Nothing in these particulars shall be deemed a statement that the property is in good condition or otherwise or that any services or facilities are in good working order. All measurements are approximate